

ASb
approved



Palesa O Rata Dimela

Mothago Sara Mohale

Jesse Pietersen

Sepedi





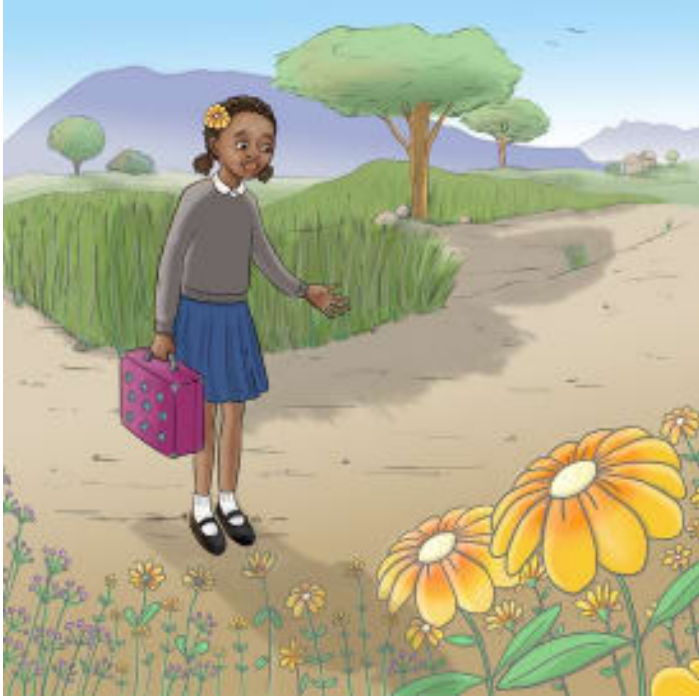
Yo ke Palesa. Leina la gagwe le ra go re 'letšoba' ka polelo ya gabo ya Setswana.



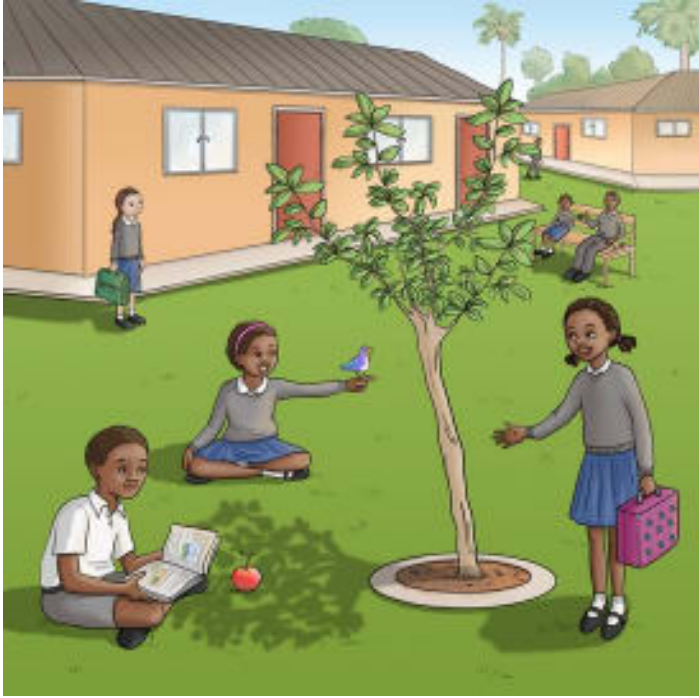
Palesa o bolela le mohlare wa monamune mo mesong.
"Mohlare wa monamune, re kgopela o re fe dinamune tše
dintši."



Palesa o ya sekolong ka maoto. Mo tseleng o bolela le bjang o re, "Ka kgopelo bjang, gola o be yo motala o se ke wa omelela."



Palesa o feta matšoba a naga. "Matšoba, re leboga mebala ya lena ye mebotse ya go kganya."



Sekolong, Palesa o bolela le mohlare wo monnyane.
"Mohlare, re kgopela o be le dithabe tše kgolo gore re kgone
go dula morithing ge re bala."



Palesa o bolela le mehlašana yeo e dikologilego sekolo. "Ka kgopelo, gola o tiye gore o thibele batho ba go se loke go tsena ka sekolong."



Ge Palesa a boa sekolong, o etela mohlare wa dinamune.
"Na dinamune tša gago di šetše di butšwitše?" a botšiša a
realo.



"Dinamune di sa le tala," Palesa a realo ka go nyama. "Ke tla go bona gosasa mohlare wa monamune," a realo.
"Mohlomongwe o tla be o ntshwaretše namune ya go butšwa!"

You are free to download, copy, translate or adapt this story
and use the illustrations as long as you attribute in the
following way: Ursula Nafula Author - Ursula Nafula

Translation - Motlhago Sara Mohale

Illustration - Jesse Pietersen

Language - Sepedi

Level - First sentences © African Storybook Initiative 2015

Creative Commons: Attribution 4.0

Source www.africanstorybook.org

